

Place Value

PS Problem-solving questions

Challenge 1

1 Draw **two more** lines to match **4500** to amounts with the same value.

4500

- 45 tens
- 4500 units
- 450 tens
- 450 units
- 45 hundreds

2 marks

2 Write these numbers in order from the smallest to the largest.

316 31.6 36.1 3.61 31

Smallest Largest

4 marks

3 Circle the numbers with 35 tens.

3527 2357 35572 357

1 mark

Marks...../7

Challenge 2

1 Use $>$ and $<$ to make these statements correct.

a) $19.4 \square 18.9$ b) $67438 \square 69436$ c) $2.357 \square 2.537$

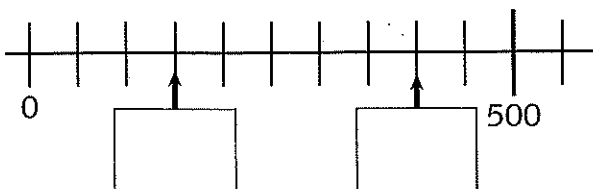
3 marks

PS 2 Use all of these digit cards to make an odd number whose tens are less than 7.

3 6 8

1 mark

3 Fill in the boxes on the number line.



2 marks

Marks...../6

Place Value

Challenge 3

1 What are the next three terms in the sequence?

12 16.5 21 _____

2 Which is nearer to 300?

279 or 311 _____

PS 3 Using each of these five cards once, complete the statements below.

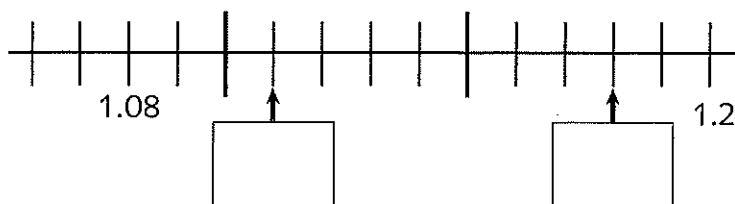
3 4 6 8 9

a) $1 \square 6 > 190$

b) $3 \square > \square 5$

c) $\square 6 < 4 \square$

4 Fill in the boxes on the number line.



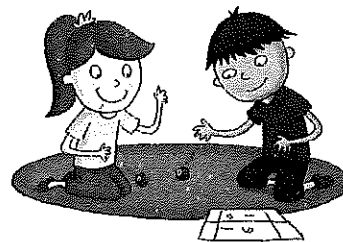
5 Circle the numbers with 32 thousands.

45329

132567

56321.8

432761.52



3 marks



1 mark



5 marks



2 marks



1 mark

Marks...../12

Total marks/25

How am I doing?

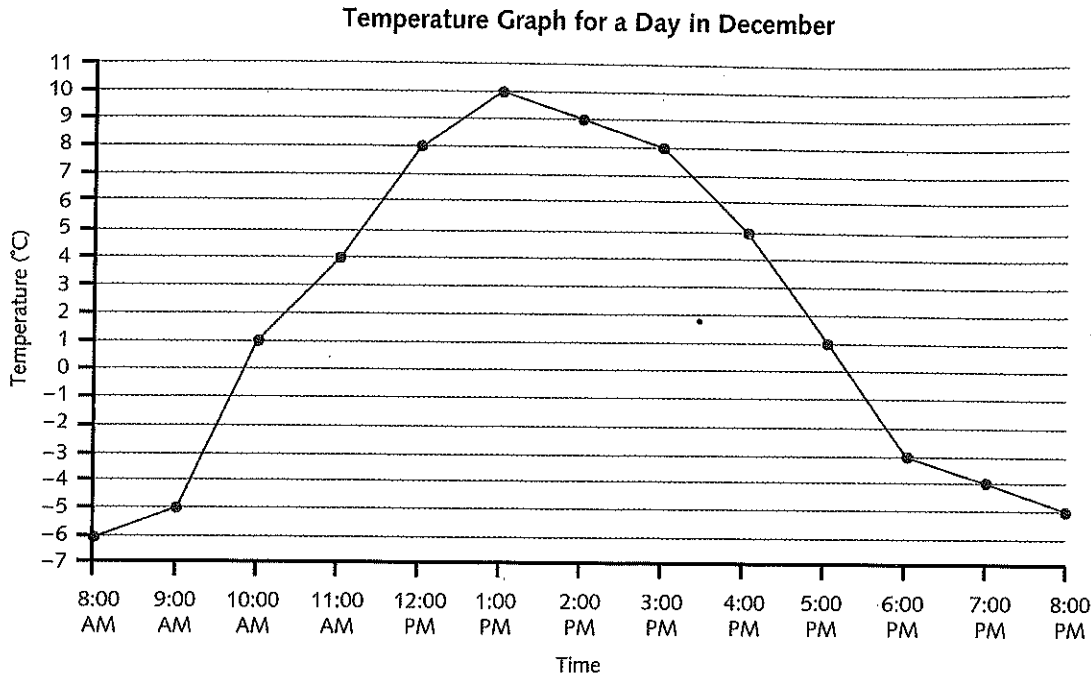


Negative Numbers

PS Problem-solving questions

Challenge 1

PS 1 Look at the temperature graph.



a) What temperature is it at 6.00 p.m.?

_____ °C



1 mark

b) At 7.00 p.m. the temperature is recorded at -4°C . At 11.00 p.m. it is measured as -12°C .

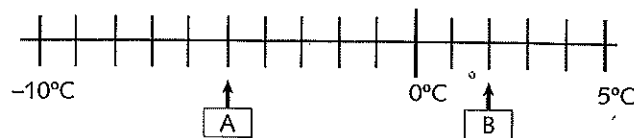
What is the temperature difference between 7.00 p.m. and 11.00 p.m.?

_____ °C



1 mark

c) What is the temperature at A and B?



A = _____ °C

B = _____ °C



2 marks

Marks..... /4

Negative Numbers

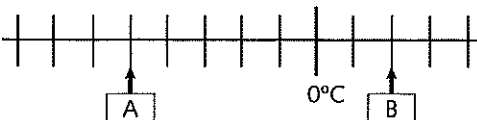
Challenge 2

- PS** 1 a) Look at the temperature graph in Challenge 1. Between which two hours did the temperature have the largest increase?
Between _____ a.m. and _____ a.m.
- b) In January, the average night temperature is -5°C and the average day temperature is 8°C . What is the temperature difference?
_____ $^{\circ}\text{C}$
- 2 This sequence is made by **adding the same amount** each time. What are the three missing numbers in the sequence?
-7 17



Marks..... /5

Challenge 3

- PS** 1 a) Look at the temperature graph in Challenge 1. What was the temperature difference between 12.00 p.m. and 7.00 p.m.?
_____ $^{\circ}\text{C}$
- b) On how many occasions was the temperature recorded below freezing (0°C)?
_____ occasions
- c) At midnight the temperature dropped another 6°C from its value recorded at 8.00 p.m. What was the temperature at midnight?
_____ $^{\circ}\text{C}$
- 2 The temperature difference between A and B is 70°C . What is the temperature at A and B?
- 

A = _____ $^{\circ}\text{C}$

B = _____ $^{\circ}\text{C}$



Marks..... /5

Total marks /14

How am I doing?

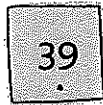
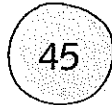


Rounding

PS Problem-solving questions

Challenge 1

- Round 34 612 to the nearest:
 - 10 _____
 - 100 _____
 - 1000 _____
- Circle the number closest to 500. 535 486 516
- Circle the numbers that give 40 when rounded to the nearest 10.



3 marks



1 mark



2 marks

Marks..... /6

Challenge 2

- PS** 1 Raymond says that if he rounds 247 to the nearest 100 it will round up because 7 is greater than 5.
- Is Raymond correct? _____
- Round 637 261 to the nearest thousand. _____
 - Which is nearer 50? 38 or 61. Give a reason for your answer.



1 mark



1 mark



1 mark

Marks..... /3

Challenge 3

- Round 725 345 to the nearest ten thousand. _____
 - What is 5.68 rounded to the nearest whole number? _____
- PS** 3 I think of a square number between 20 and 40. I multiply it by 10 and then round it to the nearest 100. My answer is 400.
- What was my number? _____



1 mark



1 mark



1 mark

Marks..... /3

Total marks /12

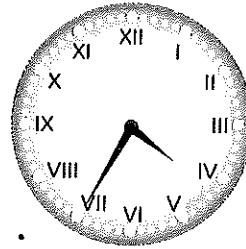
How am I doing?



Roman Numerals

Challenge 1

- 1 What is 14 in Roman numerals? _____
- 2 What year do the numerals MM represent? _____
- PS** 3 What time does the clock show?



1 mark

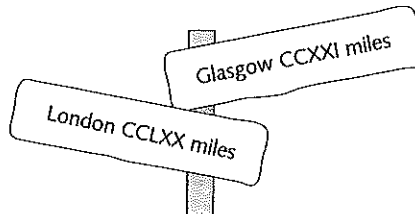
1 mark

1 mark

Marks..... /3

Challenge 2

- 1 What do the Roman numerals XXXIX represent? _____
- 2 Write 48 in Roman numerals. _____
- PS** 3 Which distance is further, London or Glasgow?



1 mark

1 mark

1 mark

Marks..... /3

Challenge 3

- 1 What year does MCMLXVI represent? _____
- PS** 2 Fill in the dates on the time line in Roman numerals.

Tudor Times	Great Fire of London	End of World War I	London Olympics	Present Day
	1666	1918	2012	
	<input type="text"/>	<input type="text"/>	<input type="text"/>	

1 mark

3 marks

Marks..... /4

Total marks /10

How am I doing?

